

# Sea Link

## Volume 6: Environmental Statement

Document 6.4.4.7.A

Part 4 Marine

Chapter 7 Appendix 4.7.A

Navigational Risk Assessment – Figures Part 2 of 2

Planning Inspectorate Reference: EN020026

Version: **AB**

**~~March-April 2026~~5**

Infrastructure Planning (Applications: Prescribed Forms and Procedure)

Regulations 2009 Regulation 5(2)(a)

# Contents

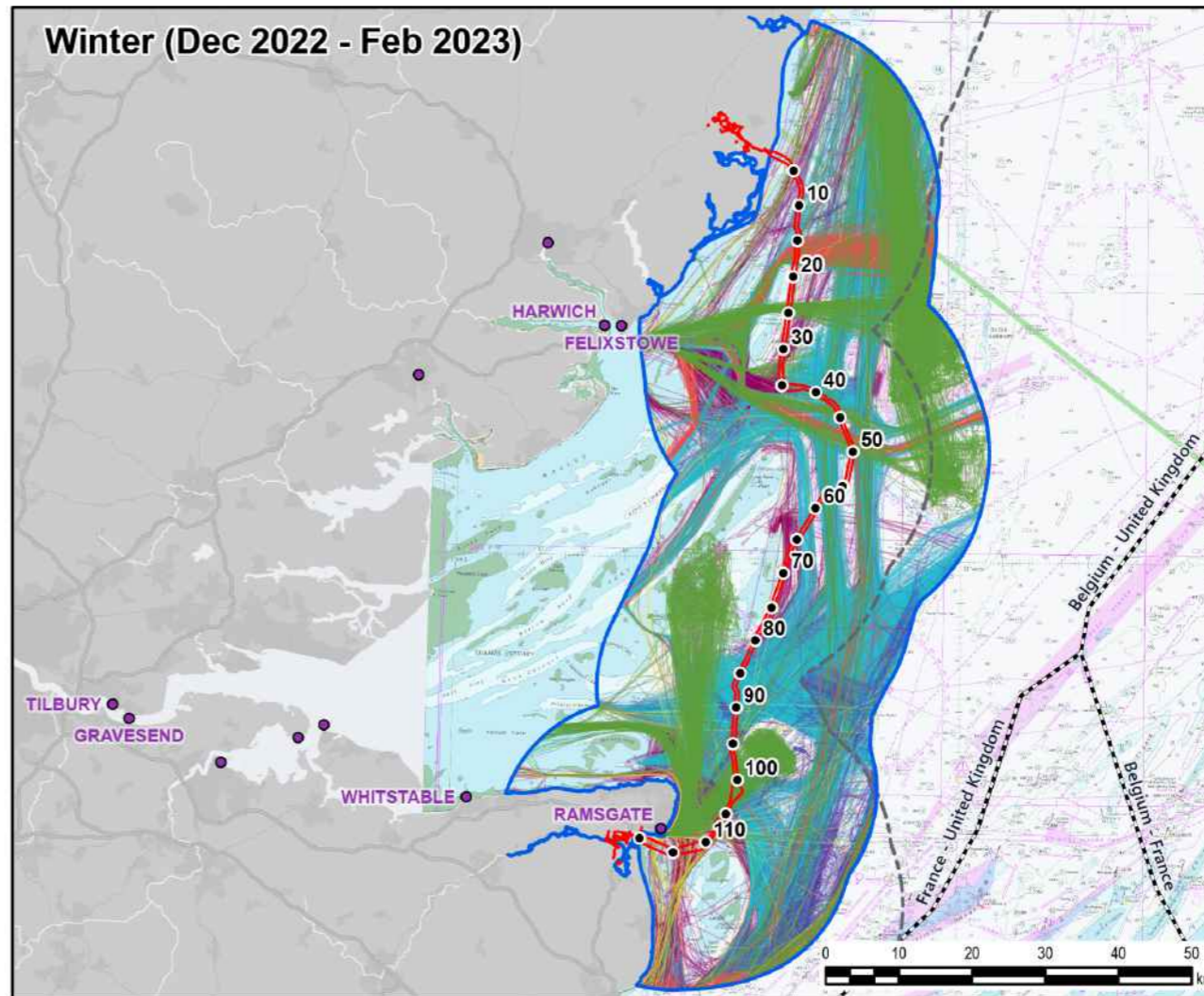
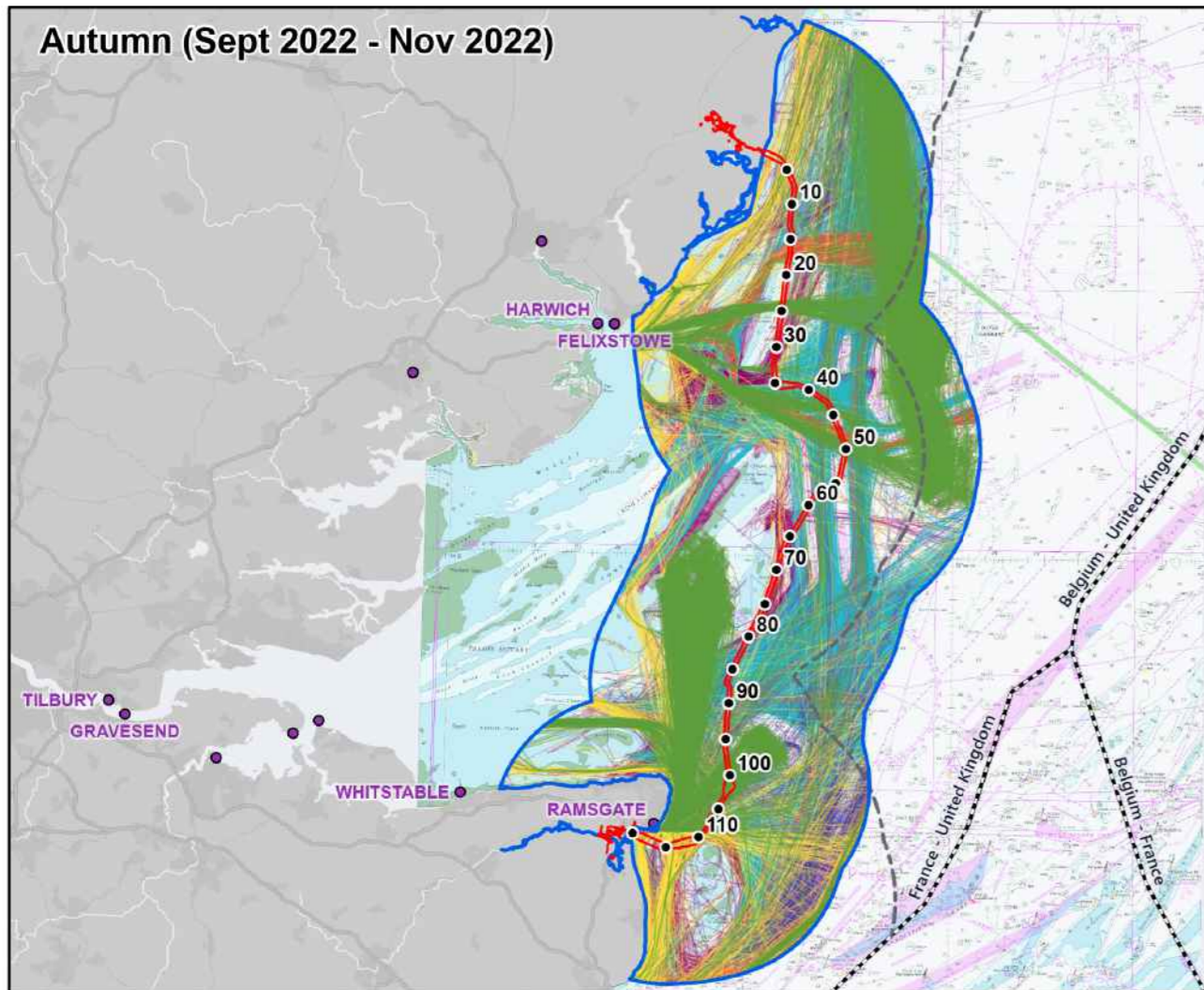
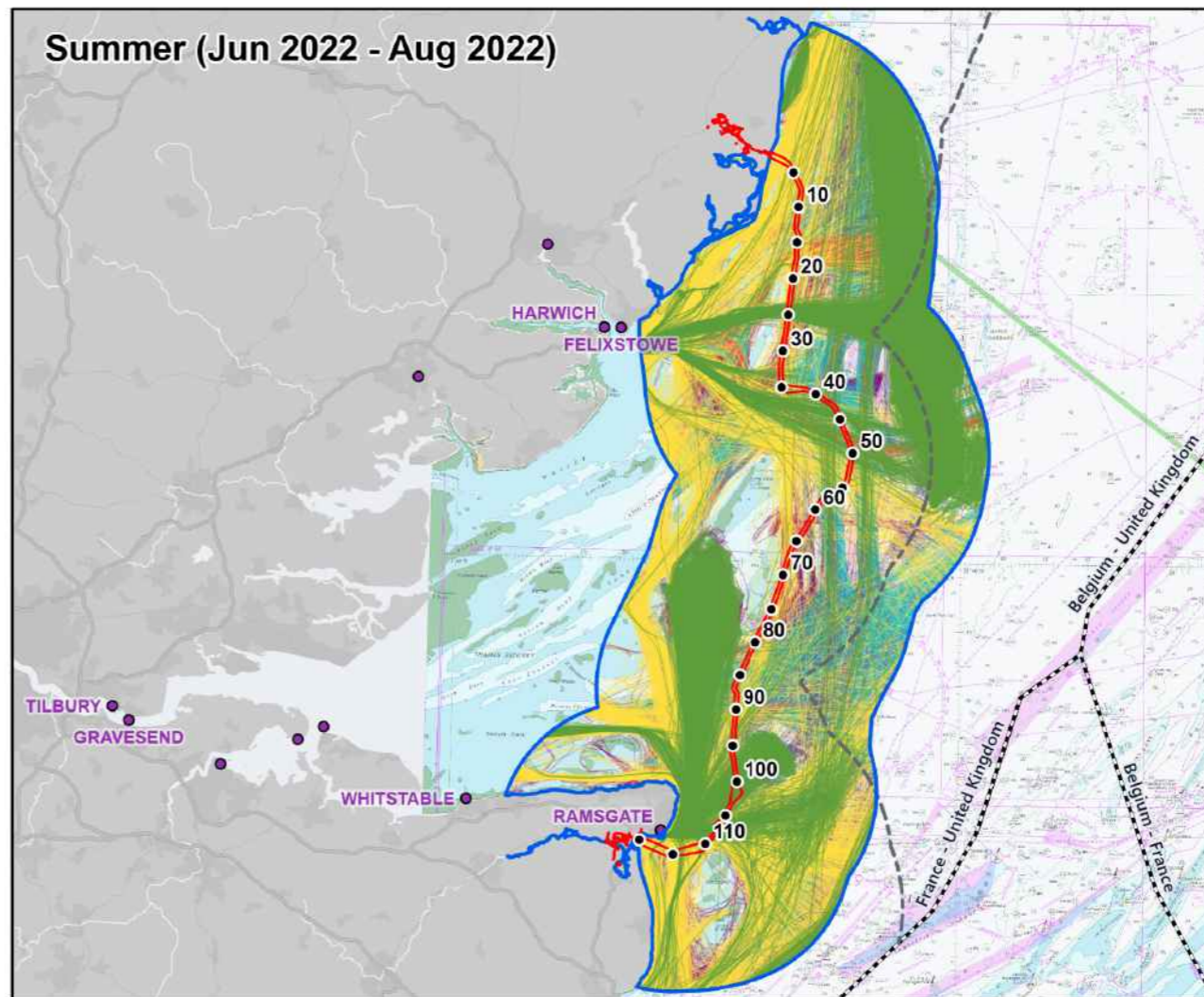
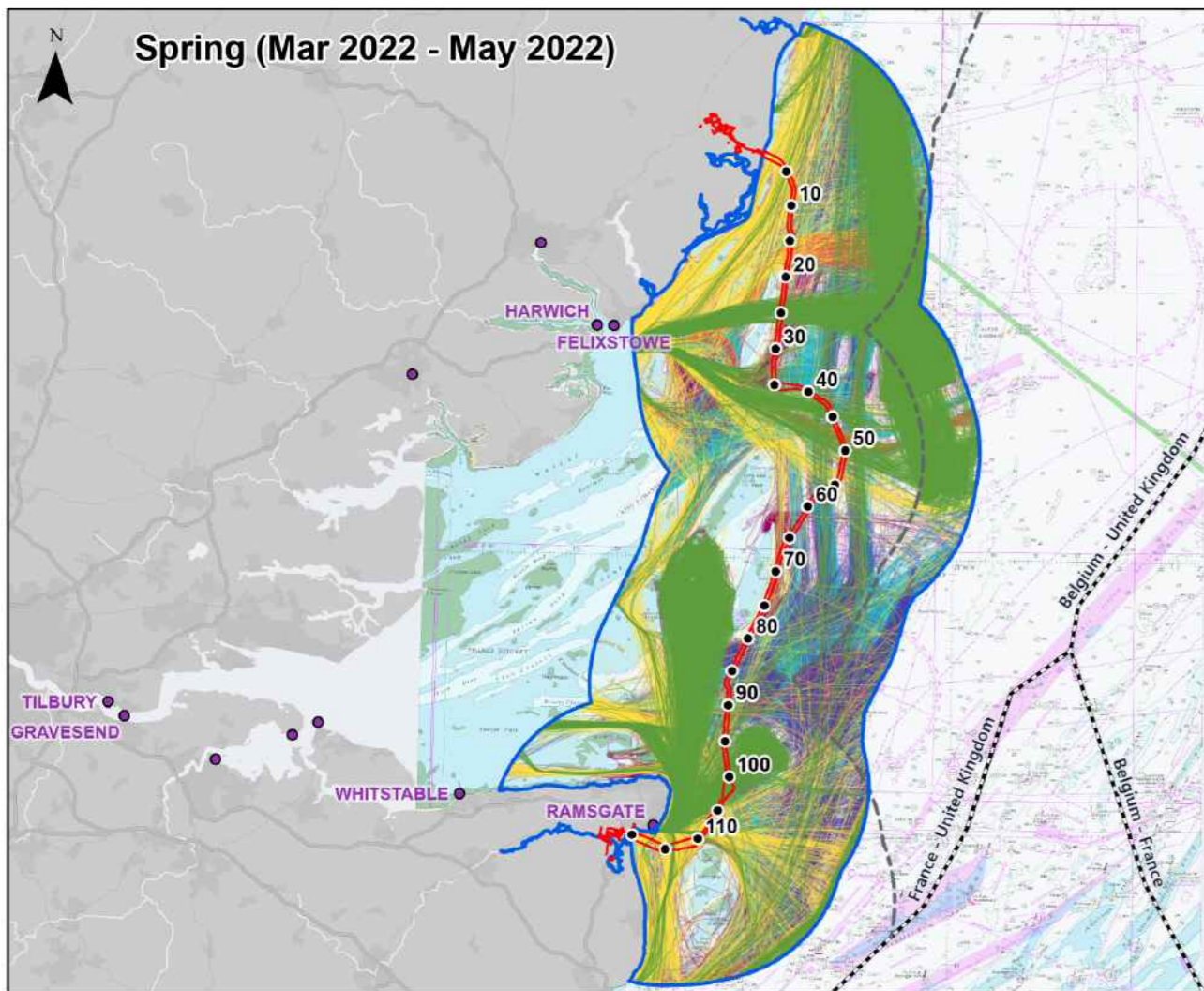
## Application Document 6.4.4.7.A Navigational Risk Assessment - Figures Part 2 of 2

- Application Document 6.4.4.7.A.11 Seasonal Vessel Tracks by Type
- Application Document 6.4.4.7.A.12 Vessel Tracks by Vessel Type
- Application Document 6.4.4.7.A.13 Vessel Length
- Application Document 6.4.4.7.A.14 Vessel DWT
- Application Document 6.4.4.7.A.15 Vessel Draught
- Application Document 6.4.4.7.A.16 Vessel at Anchor by Season
- Application Document 6.4.4.7.A.17 Fishing Vessels by Vessel Length and Subtype
- Application Document 6.4.4.7.A.18 AIS Data Points With Status Set to Actively Fishing by Season
- Application Document 6.4.4.7.A.19 VMS Density and Sightings
- Application Document 6.4.4.7.A.20 VMS by ICES Sub-Rectangle - Fishing Time by Gear Type

---

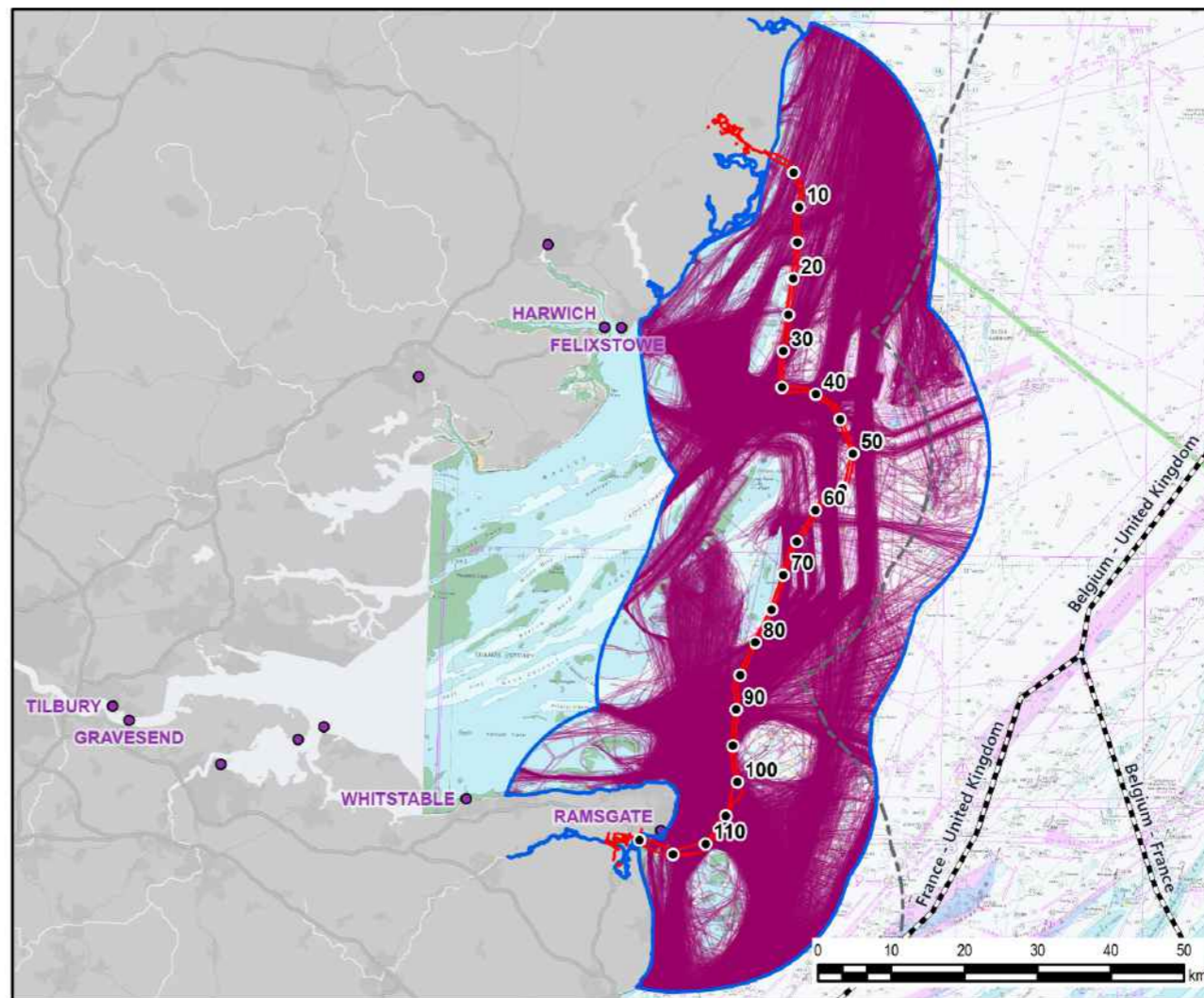
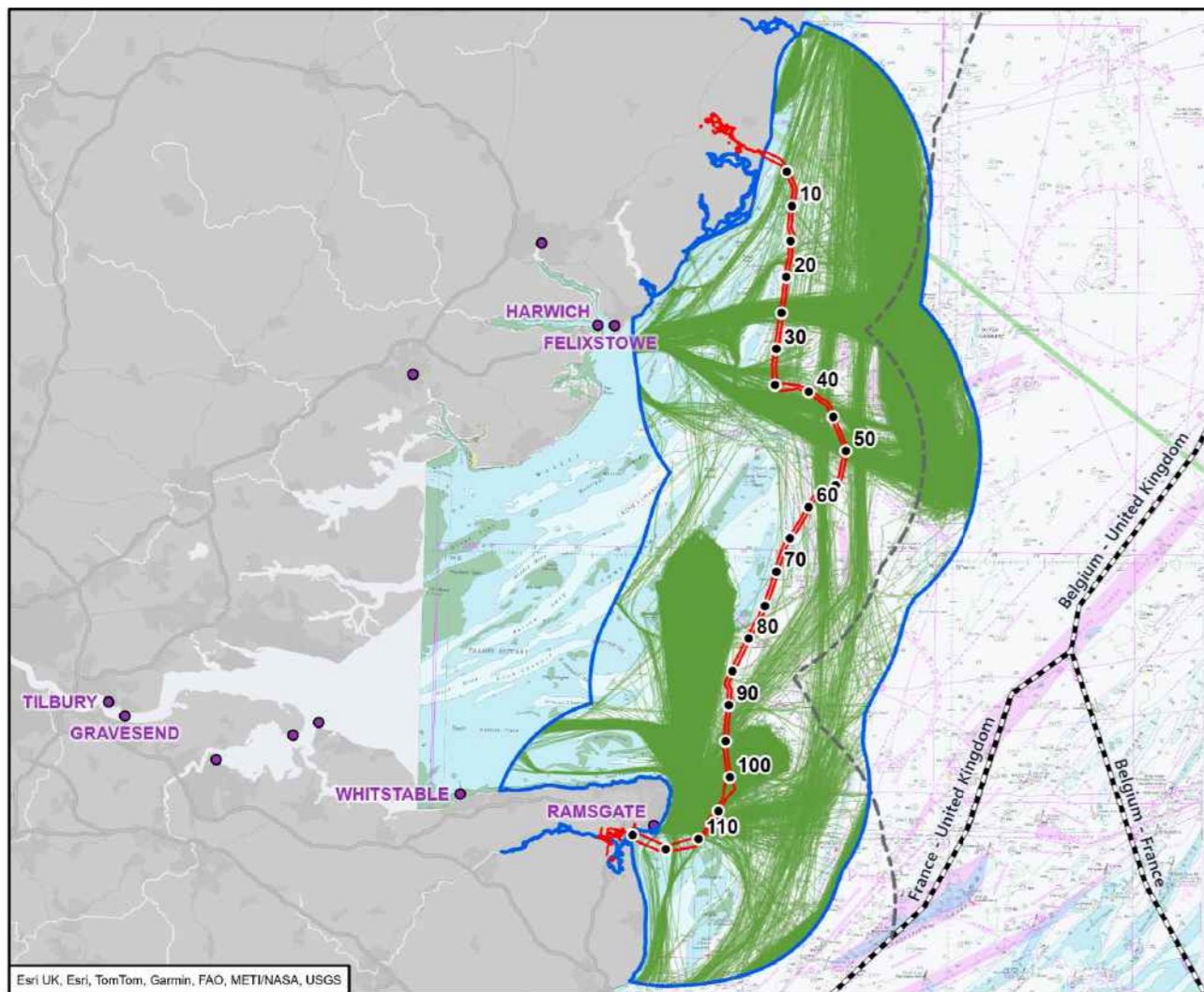
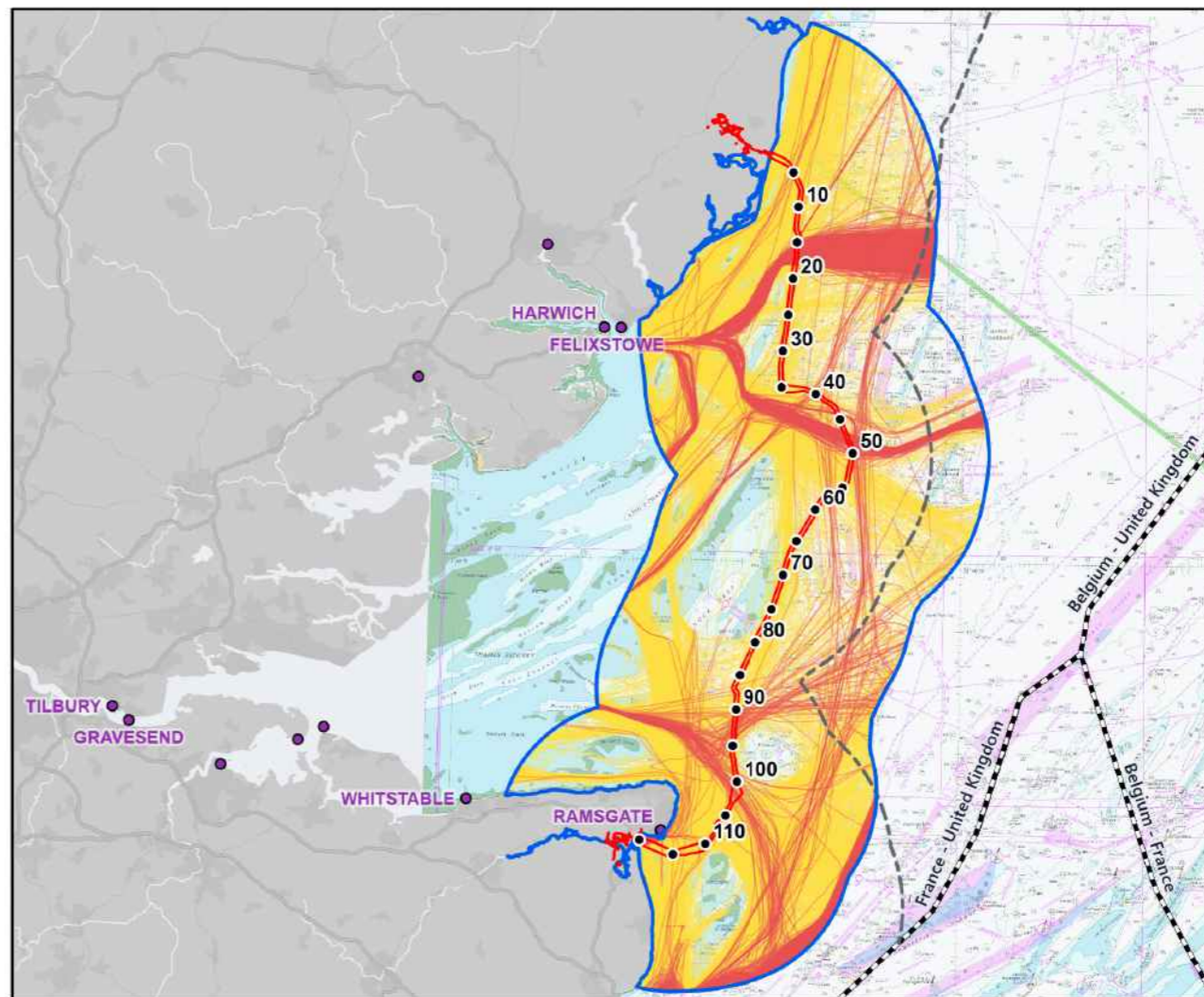
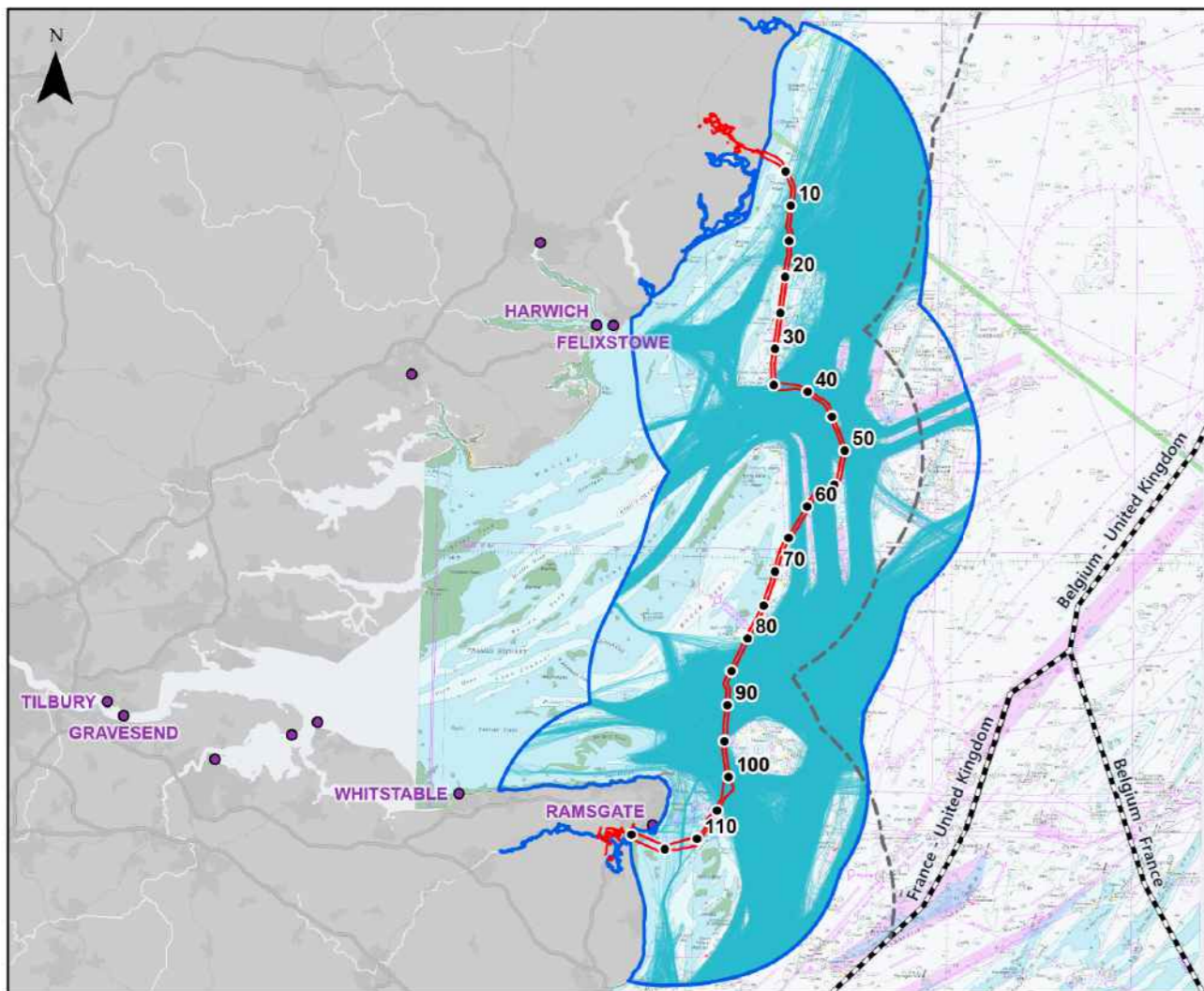
### Version History

<u>Date</u>	<u>Issue</u>	<u>Status</u>	<u>Description / Changes</u>
<u>March 2025</u>	<u>A</u>	<u>Final</u>	<u>For DCO submission</u>
<u>April 2026</u>	<u>B</u>	<u>Final</u>	<u>For Deadline 6</u>



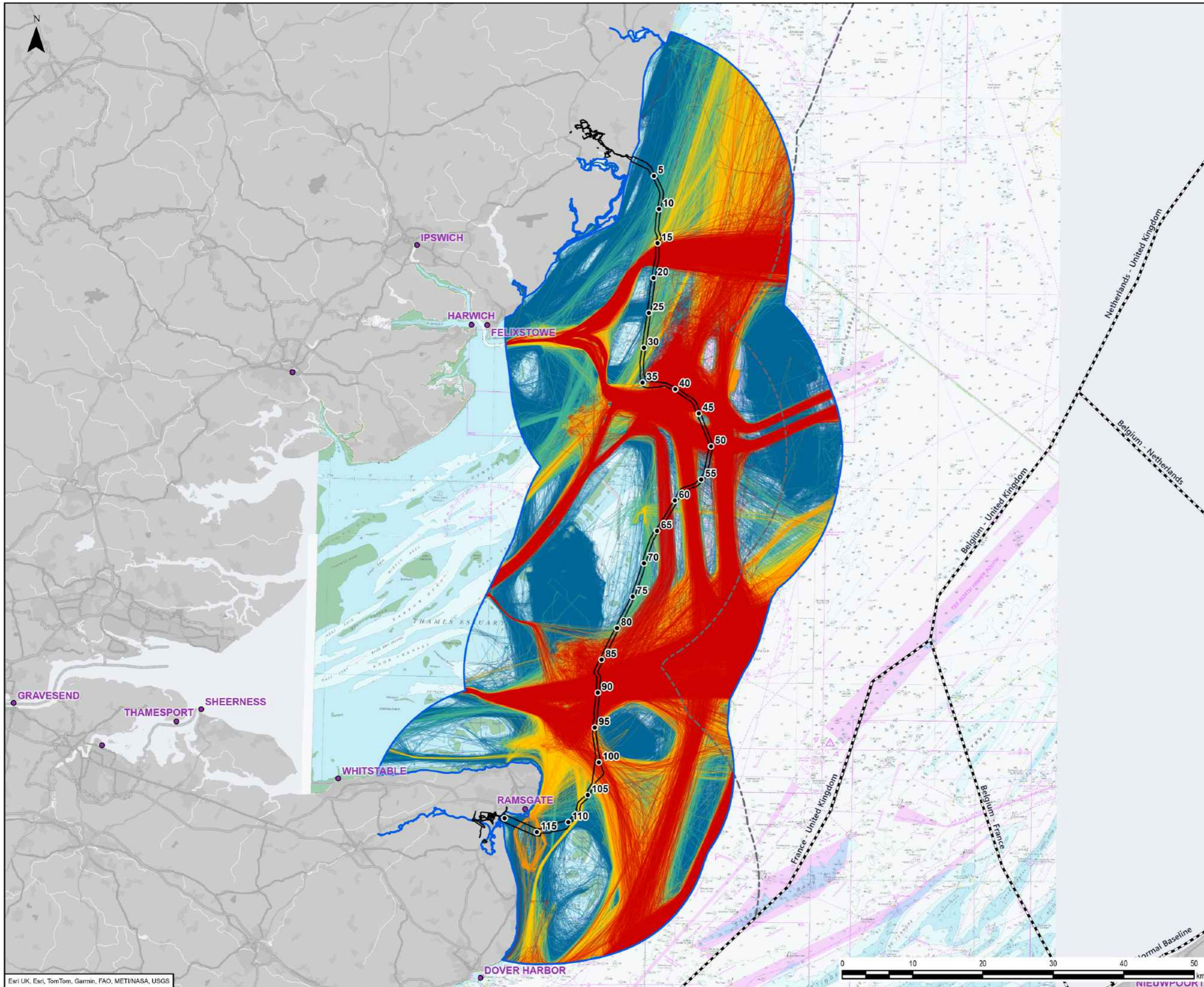
- Legend**
- Kilometre Point (KP)
  - Order Limits
  - 10 NM shipping and navigation study area
  - Port
  - - - UK Territorial Sea Limit
  - - - EEZ Boundaries
- Vessel tracks by vessel type**
- Cargo/Tanker
  - Fishing
  - Other
  - Offshore industry
  - Recreational
  - Passenger

2	02/04/2026	NAVIGATIONAL RISK ASSESSMENT	LM	JL	RJ
Rev	Date	Description	GIS	Chk	App
<b>nationalgrid</b>					
Scheme: SEA LINK					
Document Title: Seasonal vessel tracks by type					
Creator	Date	Checker	Date	Approver	Date
LM	02/04/2026	JL	02/04/2026	RJ	
Document Ref:	Scale:	Format:	Sheets:	Rev:	
FIG 6.4.4.7.A.11	1:975,000	A3	1	2	



- Legend**
- Kilometre Point (KP)
  - Order Limits
  - 10 NM shipping and navigation study area
  - Port
- Vessel tracks by vessel type**
- Cargo/Tanker
  - Other
  - Offshore industry
  - Recreational
  - Passenger

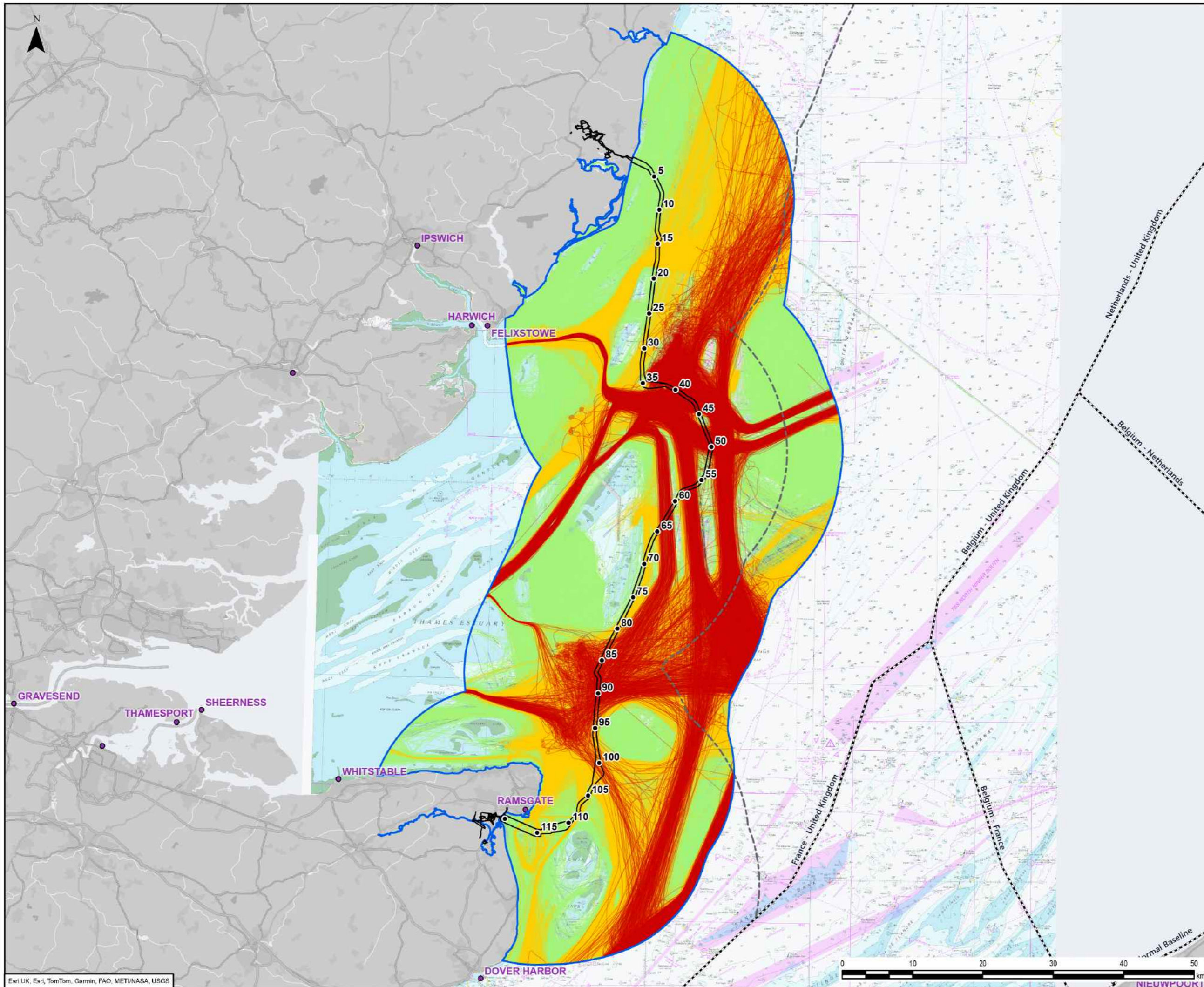
2	03/04/2026	NAVIGATIONAL RISK ASSESSMENT	LM	JL	RJ
Rev	Date	Description	GIS	Chk	App
<b>nationalgrid</b>					
Scheme: SEA LINK					
Document Title: Vessel tracks by vessel type					
Creator	Date	Checker	Date	Approver	Date
LM	03/04/2026	JL	03/04/2026	RJ	
Document Ref:	Scale:	Format:	Sheets:	Rev:	
FIG 6.4.4.7.A.12	1:975,000	A3	1	2	



- Legend**
- Kilometre Point (KP)
  - Order Limits
  - ▭ 10 NM shipping and navigation study area
  - Port
  - - - UK Territorial Sea Limit
  - - - EEZ Boundaries
- Vessel length (m)**
- Unknown
  - ≤50 m
  - ≤100 m
  - ≤150 m
  - ≤200 m
  - Over 200 m

2	02/04/2026	NAVIGATIONAL RISK ASSESSMENT	LM	JL	RJ
Rev	Date	Description	GIS	Chk	App

<b>nationalgrid</b>					
Scheme: SEA LINK					
Document Title: Vessel length					
Creator	Date	Checker	Date	Approver	Date
LM	02/04/2026	JL	02/04/2026	RJ	
Document Ref:	Scale:	Format:	Sheets:	Rev:	
FIG 6.4.4.7.A.13	1:500,000	A3	1	2	



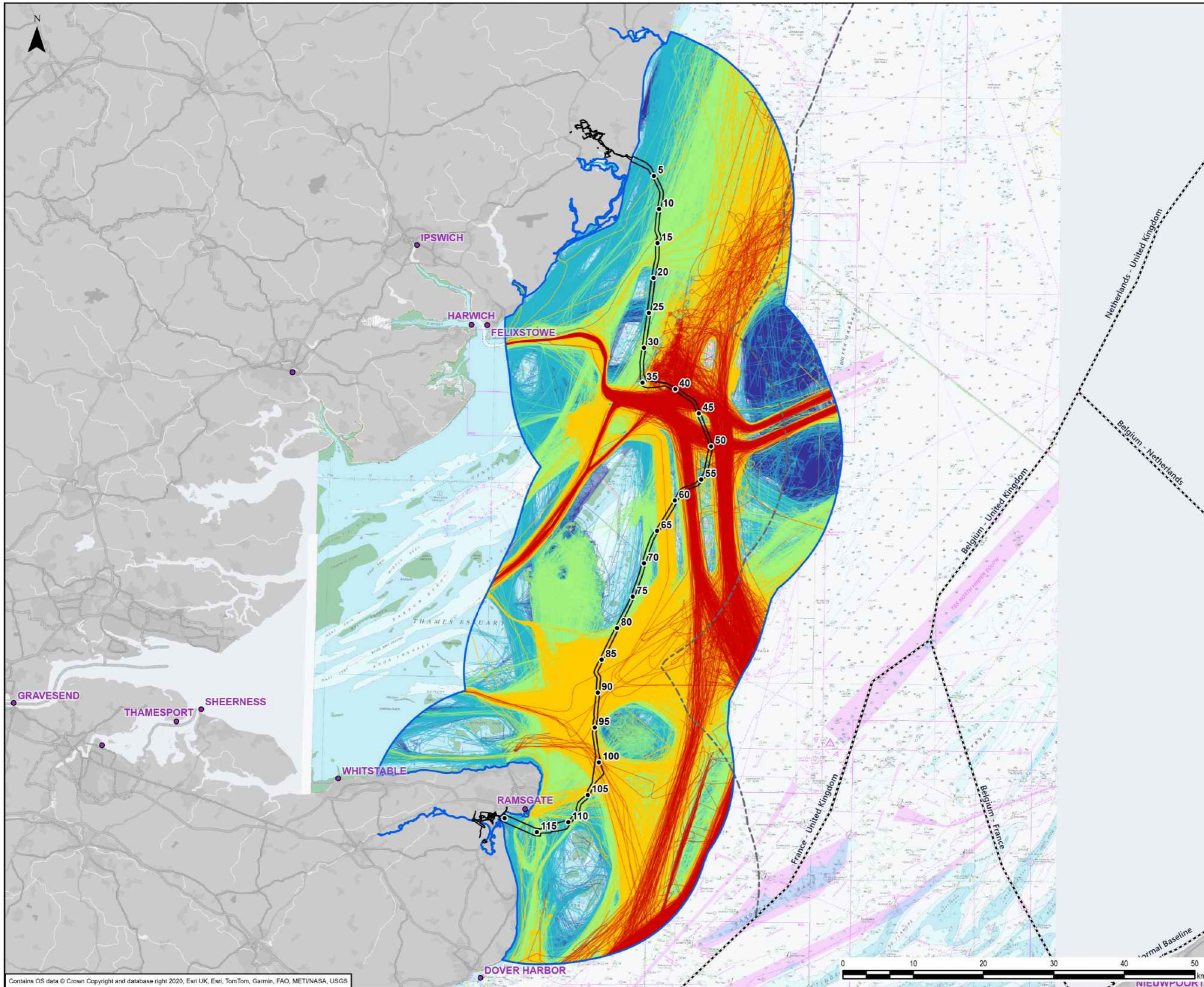
**Legend**

- Kilometre Point (KP)
- Order Limits
- 10 NM shipping and navigation study area
- Port
- - - UK Territorial Sea Limit
- - - EEZ Boundaries

**Dead weight tonnage (DWT)**

- ≤250
- ≤2,500
- ≤50,000
- ≤150,000
- >150,000

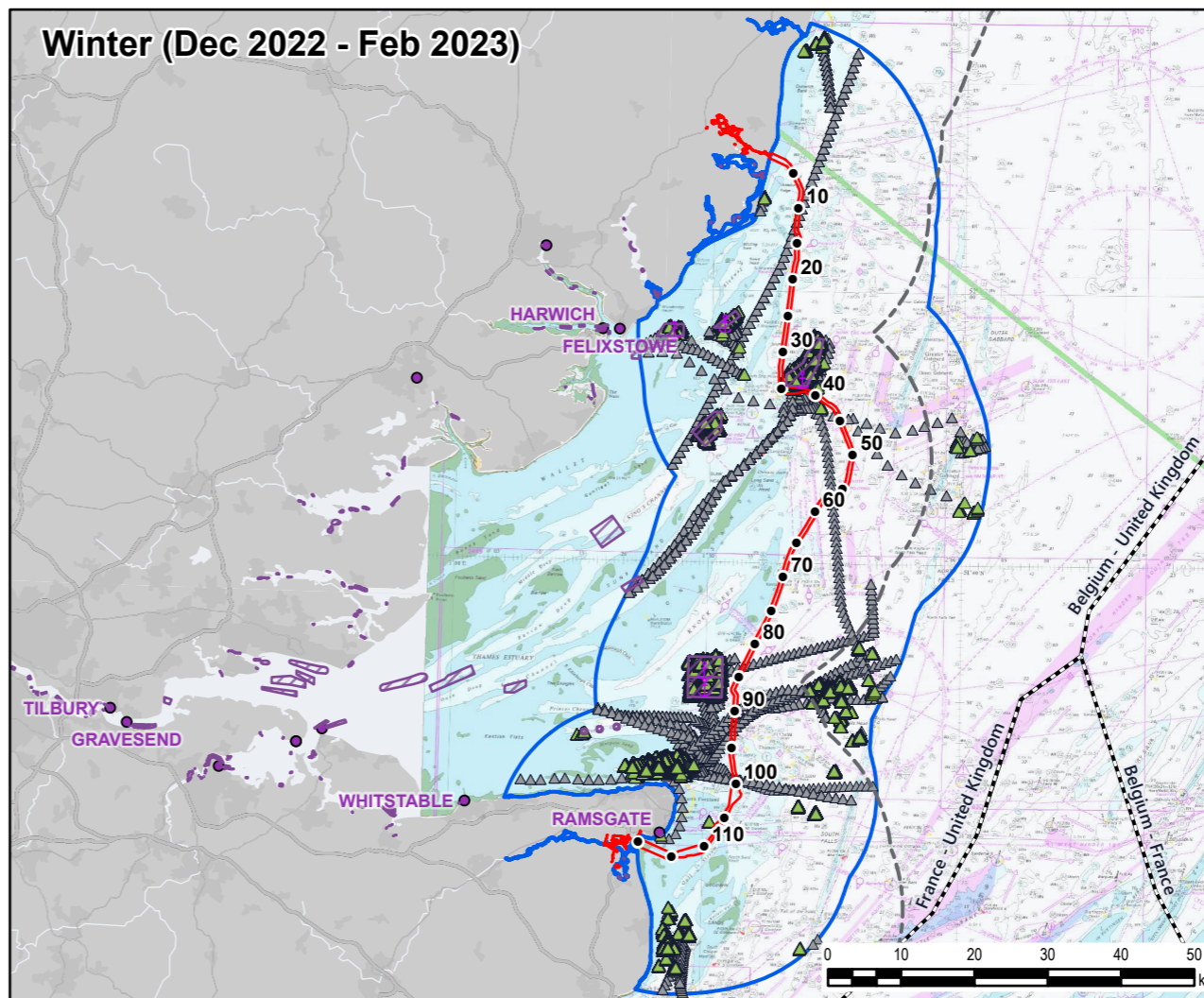
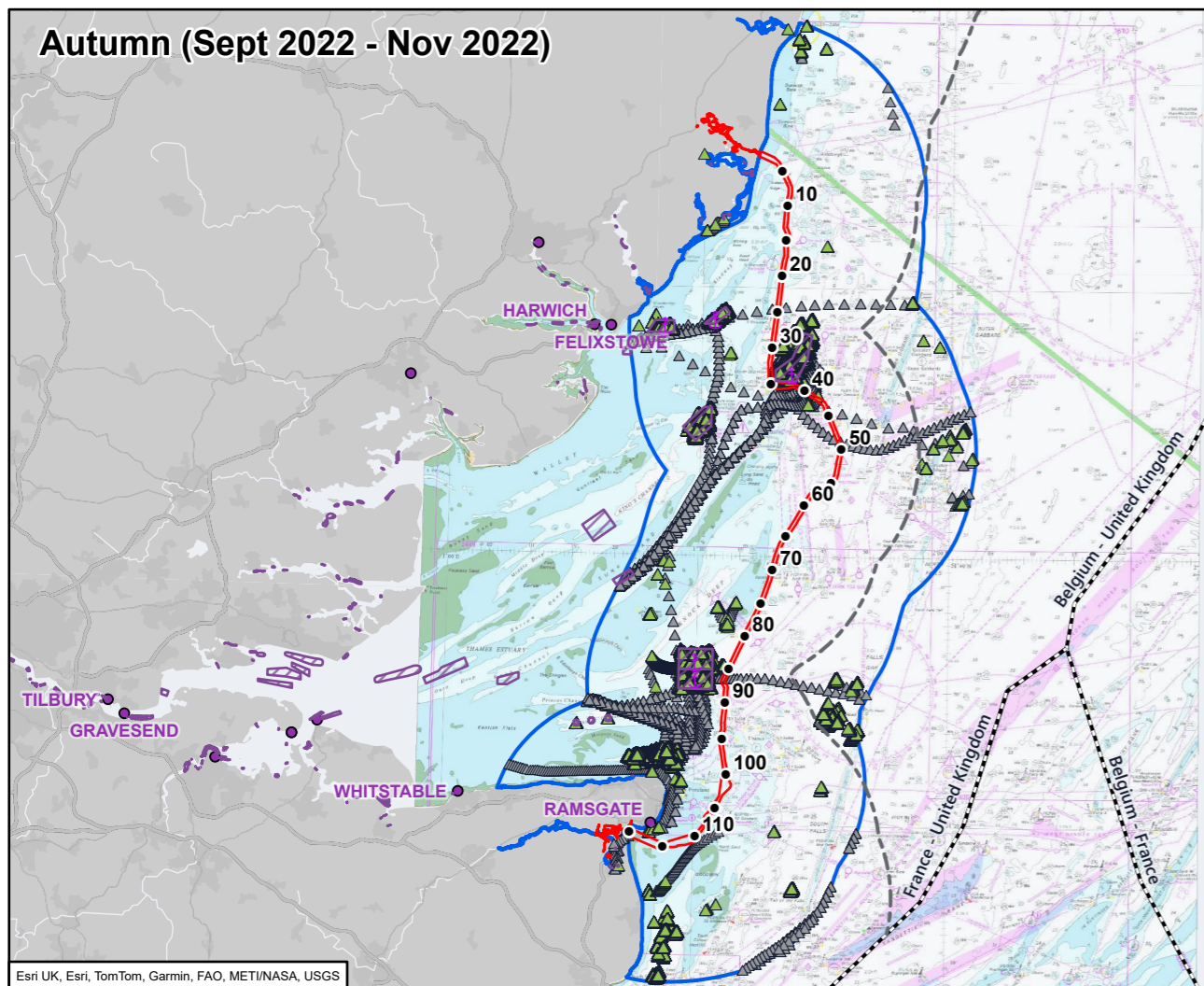
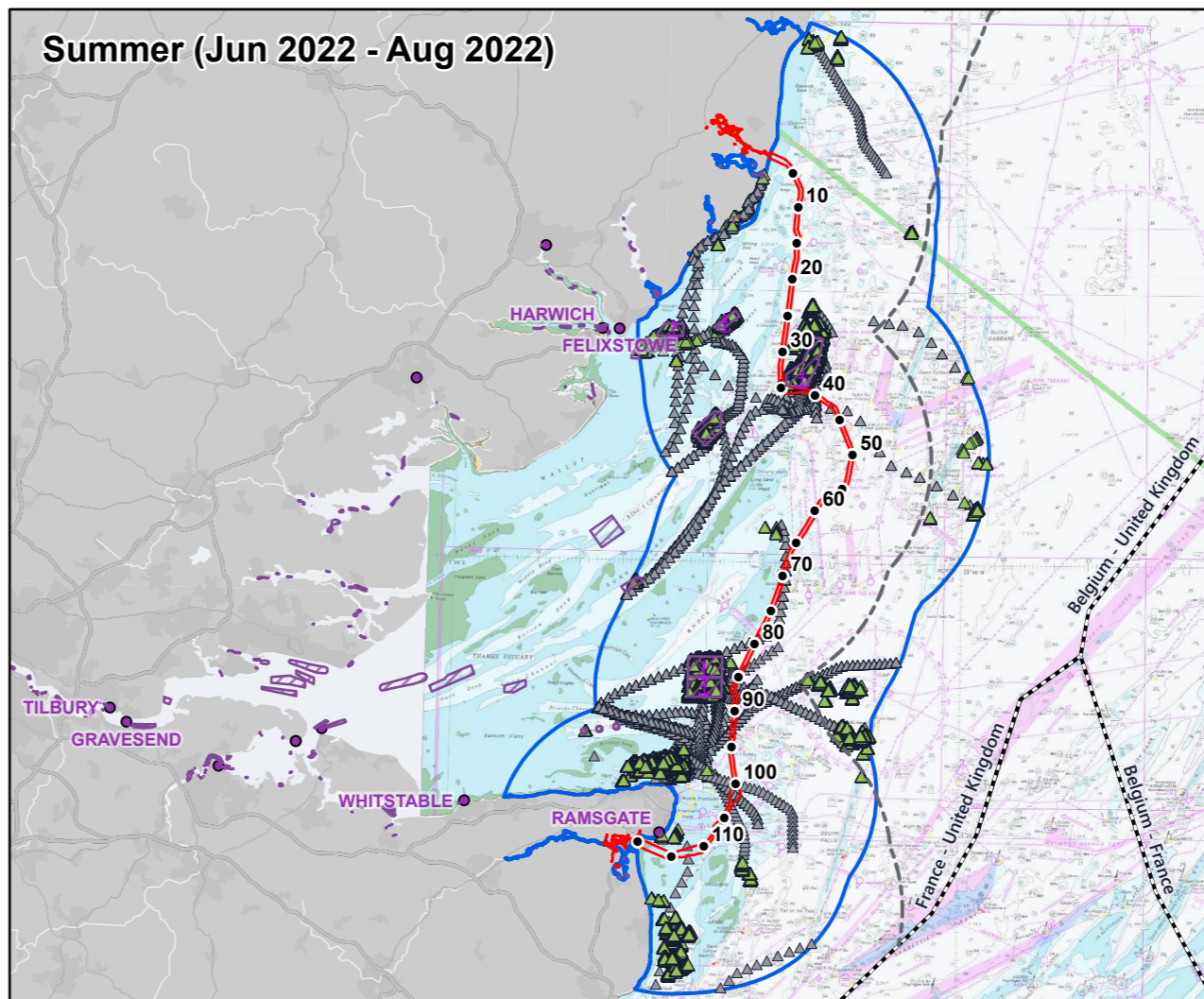
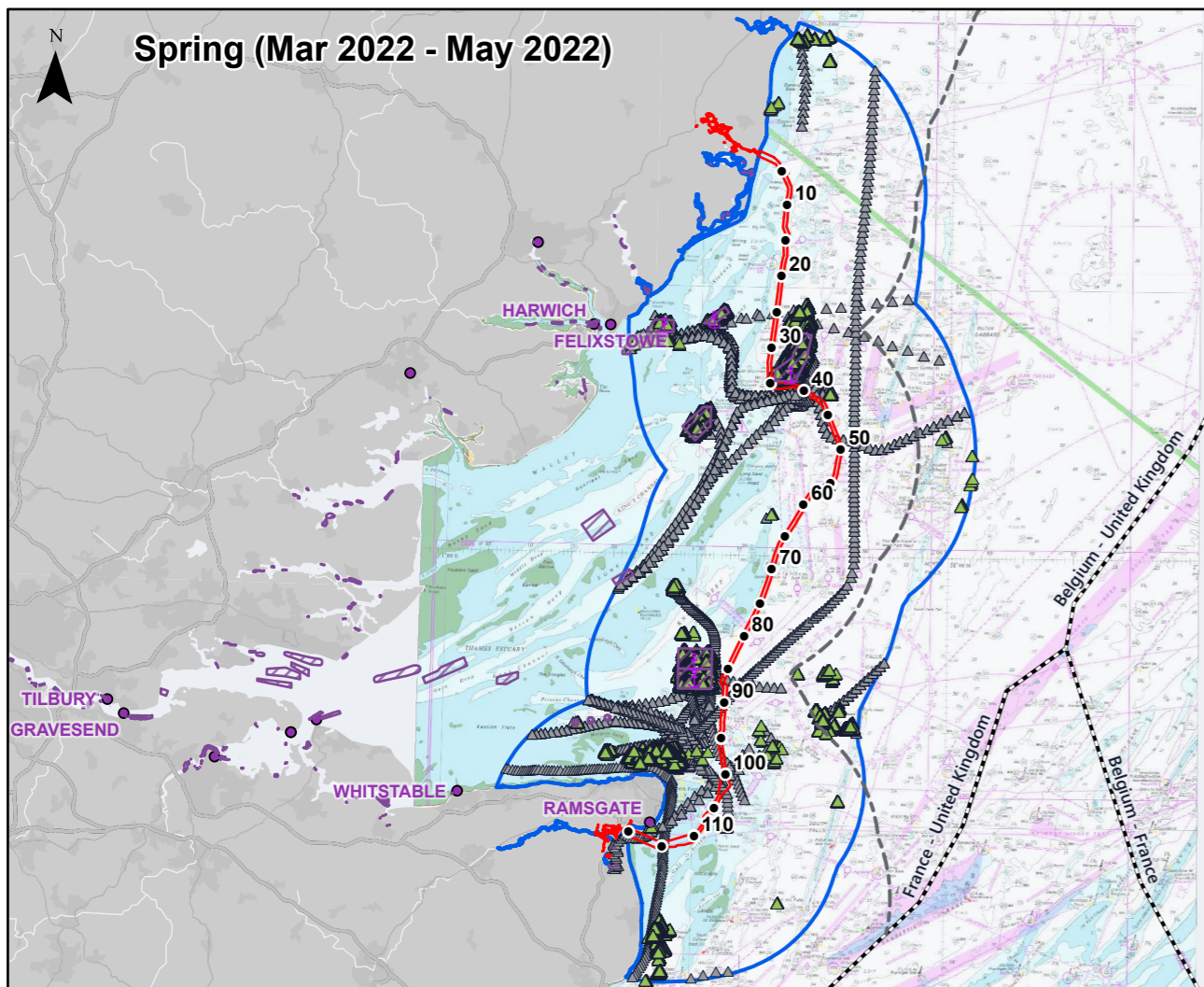
2	02/04/2026	NAVIGATIONAL RISK ASSESSMENT	LM	JL	RJ
Rev	Date	Description	GIS	Chk	App
<b>nationalgrid</b>					
Scheme: SEA LINK					
Document Title: Vessel DWT					
Creator	Date	Checker	Date	Approver	Date
LM	02/04/2026	JL	02/04/2026	RJ	
Document Ref:	Scale:	Format:	Sheets:	Rev:	
FIG 6.4.4.7.A.14	1:500,000	A3	1	2	



- Legend**
- Kilometre Point (KP)
  - Order Limits
  - ▭ 10 NM shipping and navigation study area
  - Port
  - - - UK Territorial Sea Limit
  - - - EEZ Boundaries
- Vessel draught (m)**
- <math>< 2.5</math>
  - 2.5 - 5
  - 5 - 10
  - 10 - 15
  - Over 15
  - Unknown

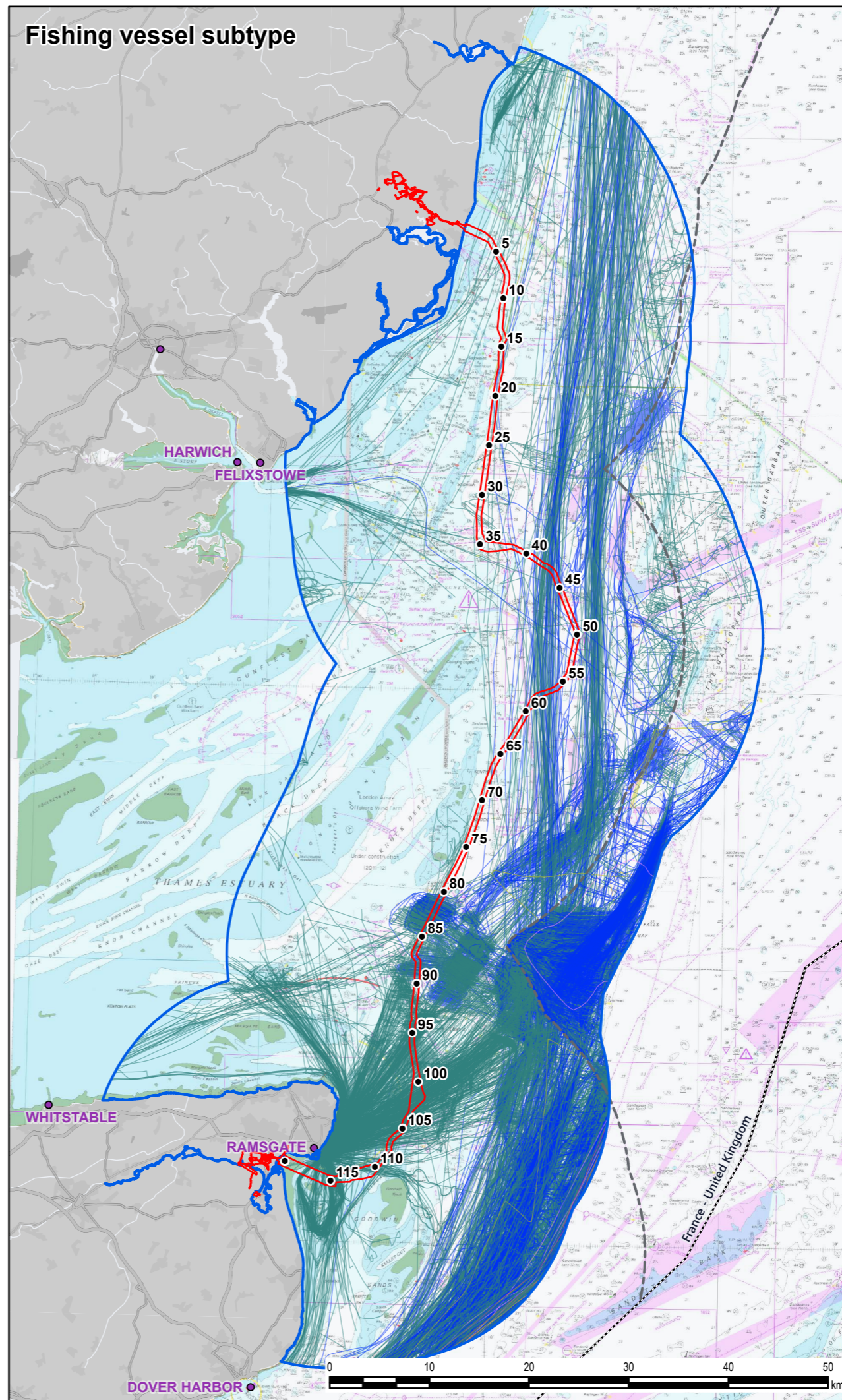
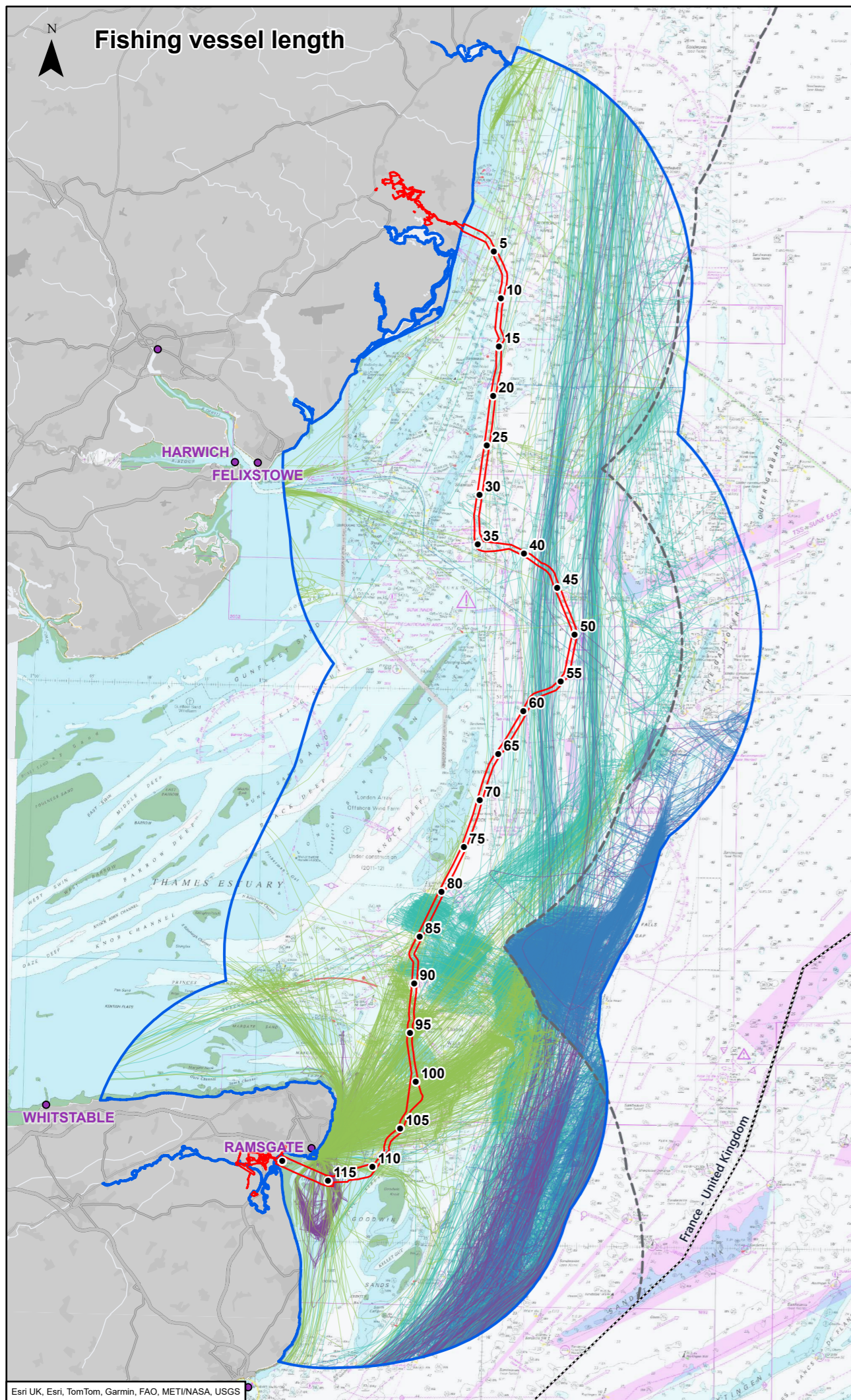
2	02/04/2026	NAVIGATIONAL RISK ASSESSMENT	LM	JL	RJ
Rev	Date	Description	GIS	Chk	App

<b>nationalgrid</b>					
Scheme: SEA LINK					
Document Title: Vessel draught					
Creator	Date	Checker	Date	Approver	Date
LM	02/04/2026	JL	02/04/2026	RJ	
Document Ref:	Scale:	Format:	Sheets:	Rev:	
FIG 6.4.4.7.A.15	1:500,000	A3	1	2	



- Legend**
- Kilometre Point (KP)
  - ▭ Order Limits
  - ▭ 10 NM shipping and navigation study area
  - Port
  - - - UK Territorial Sea Limit
  - ⋯ EEZ Boundaries
  - ▲ AIS points where vessel status is set to 'at anchor', speed < 2 knots
  - △ AIS points where vessel status is set to 'at anchor', speed > 2 knots
- Navigational features**
- ⚓ Anchorage
  - ▭ Anchorage area

2	26/03/2026	NAVIGATIONAL RISK ASSESSMENT	LM	JL	RJ
Rev	Date	Description	GIS	Chk	App
<b>nationalgrid</b>					
Scheme: SEA LINK					
Document Title: Vessels at anchor by season					
Creator: LM	Date: 26/03/2026	Checker: JL	Date: 26/03/2026	Approver: RJ	Date:
Document Ref: FIG 6.4.4.7.A.16	Scale: 1:975,000	Format: A3	Sheets: 1	Rev: 2	



**Legend**

- Kilometre Point (KP)
- Order Limits
- 10 NM shipping and navigation study area
- Port
- UK Territorial Sea Limit
- EEZ Boundaries

**Fishing vessel length**

- <15
- 15 - 30
- 30 - 50
- >50

**Vessel type**

- Trawler
- Fishing or Fishing vessel
- Fishery Research Vessel
- Fishery Patrol Vessel
- Fish Factory
- Fish Carrier
- Factory Trawler

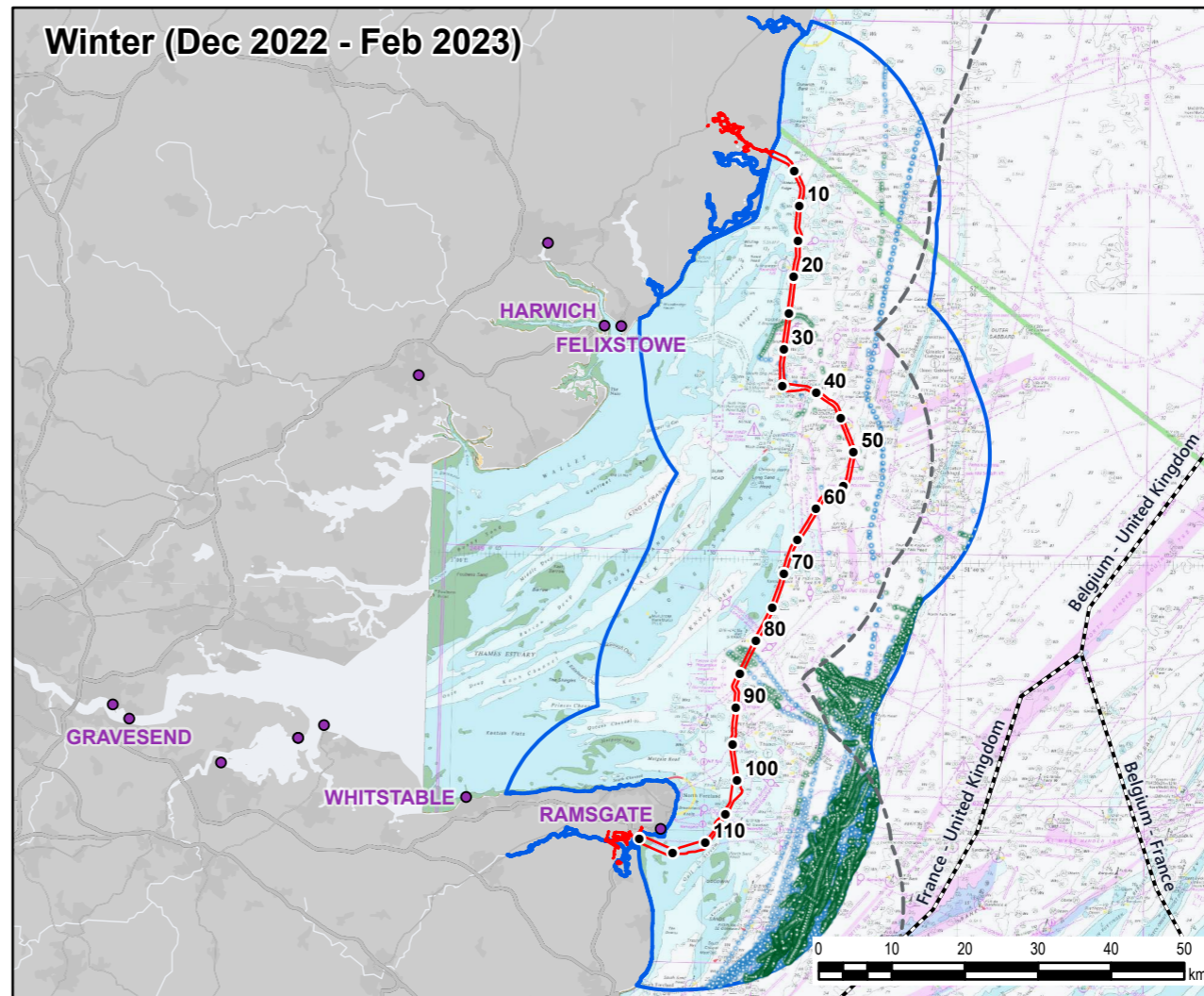
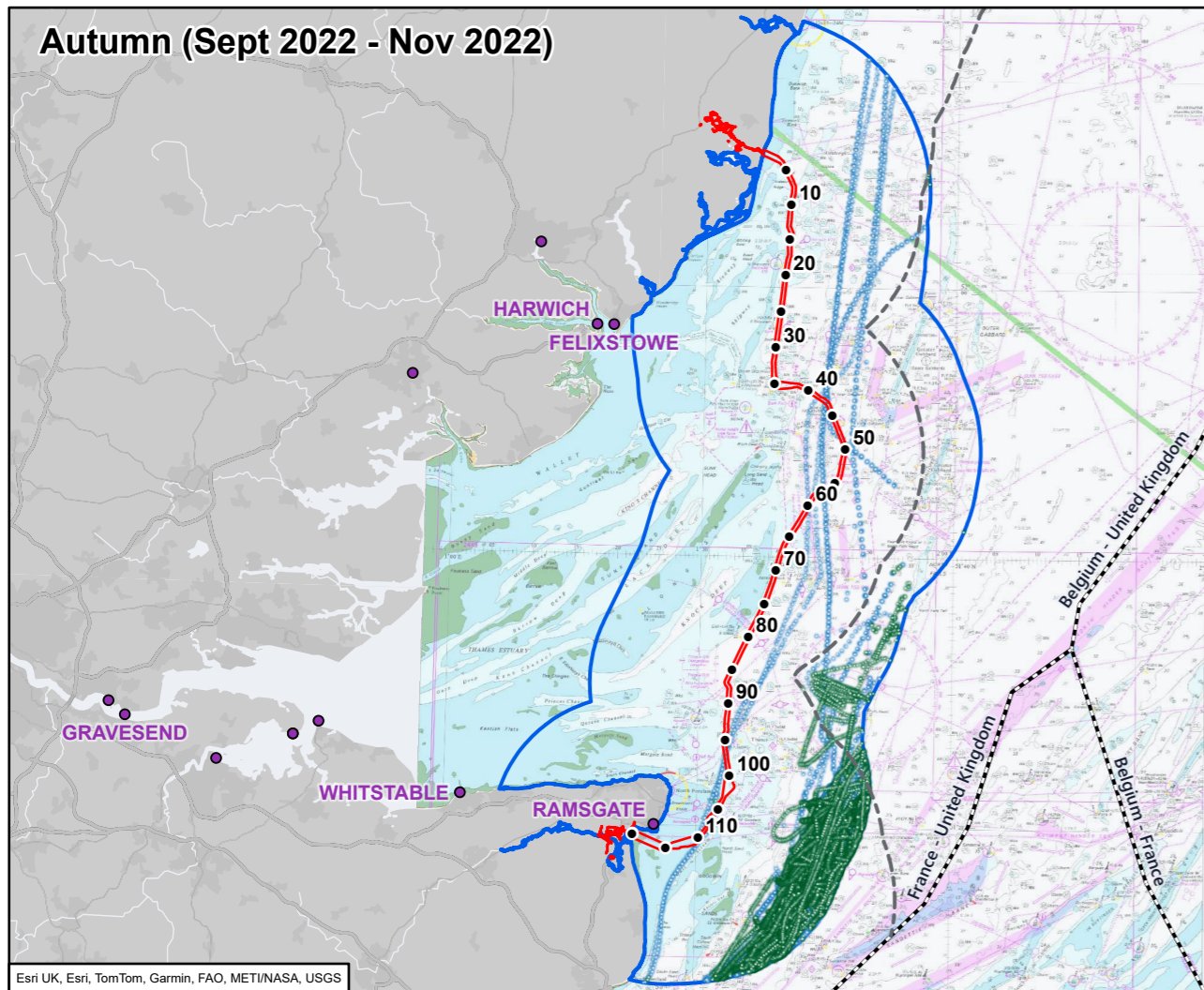
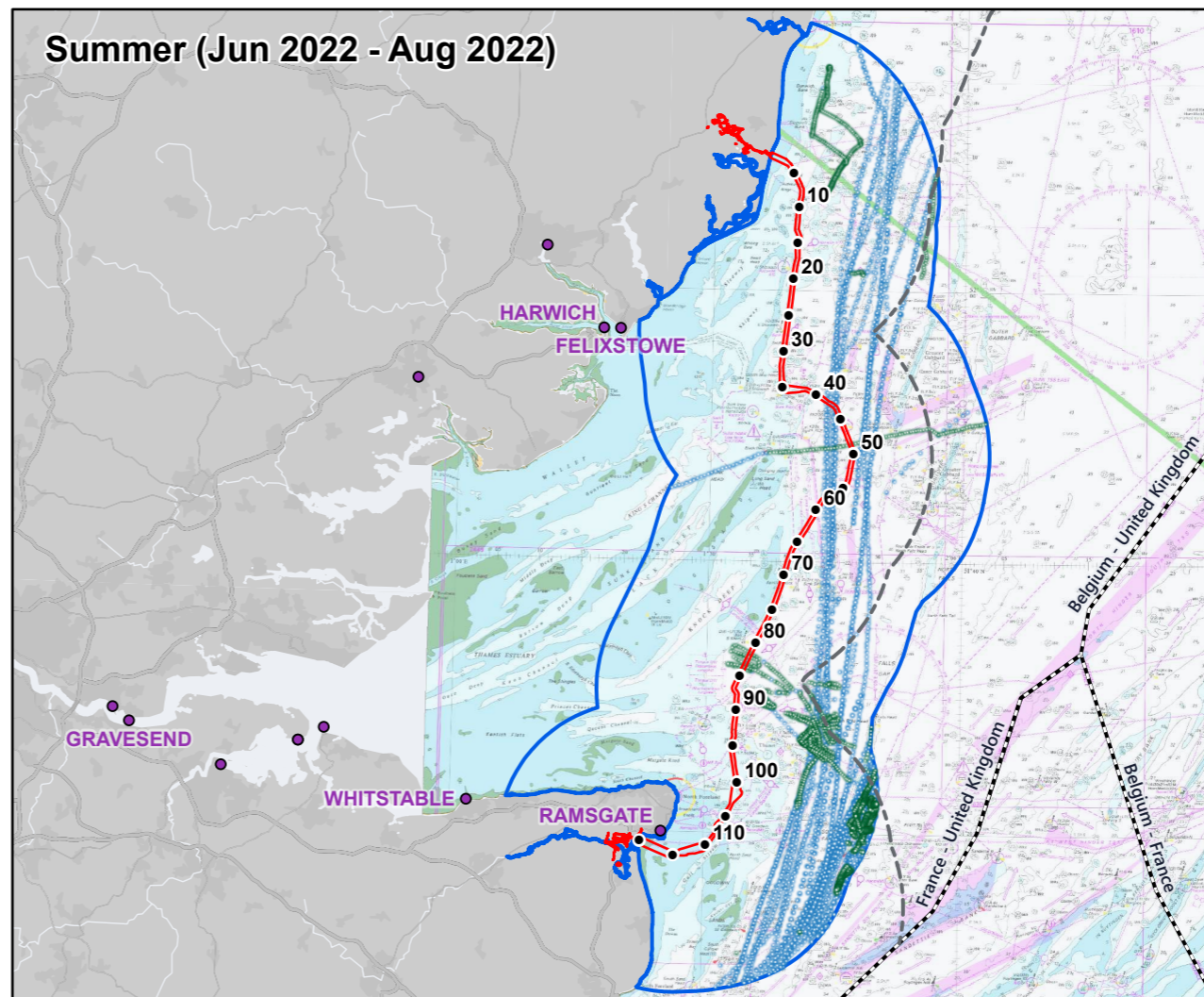
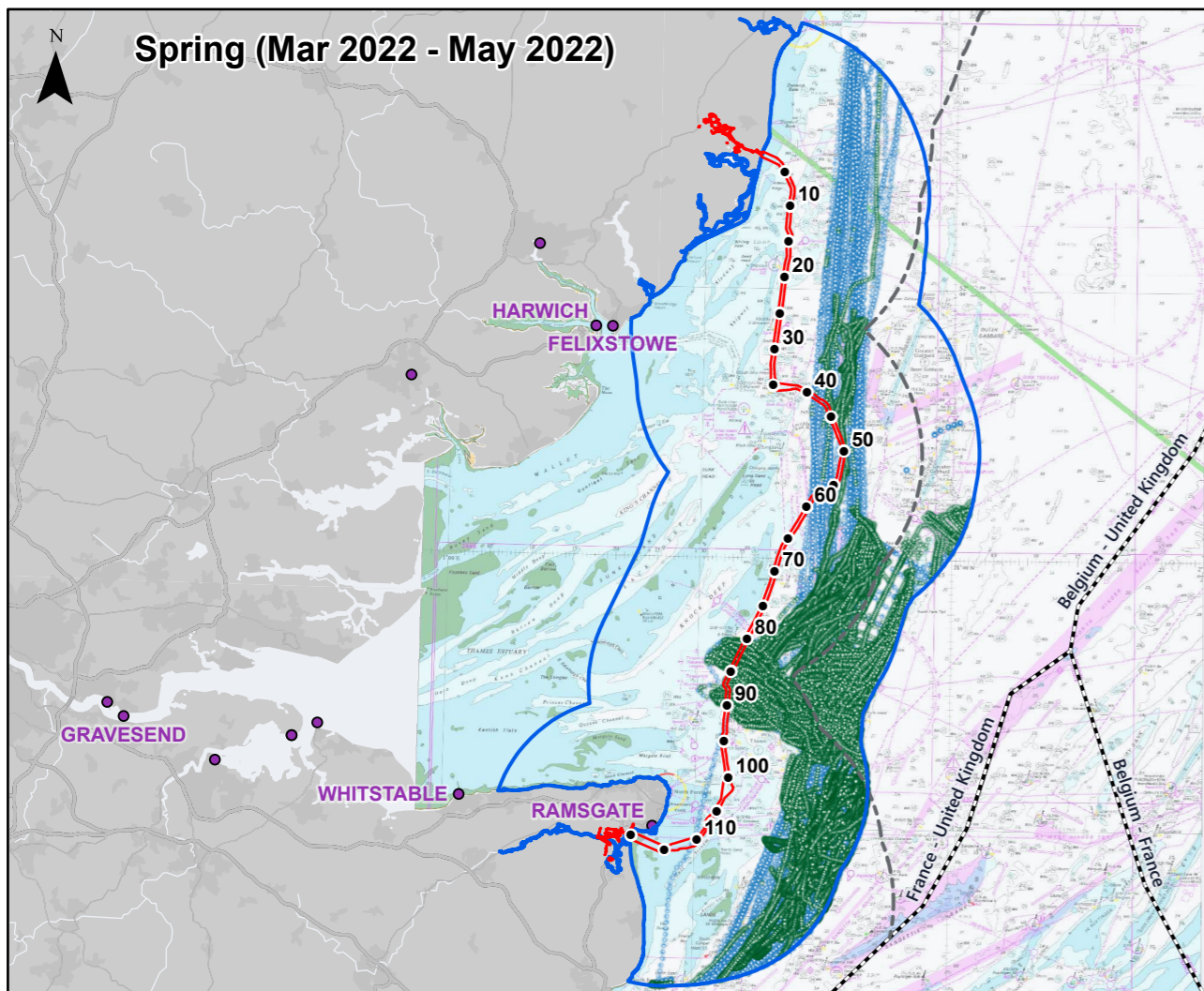
2	18/03/2026	NAVIGATIONAL RISK ASSESSMENT	LM	JL	RJ
Rev	Date	Description	GIS	Chk	App

**nationalgrid**

Scheme: SEA LINK

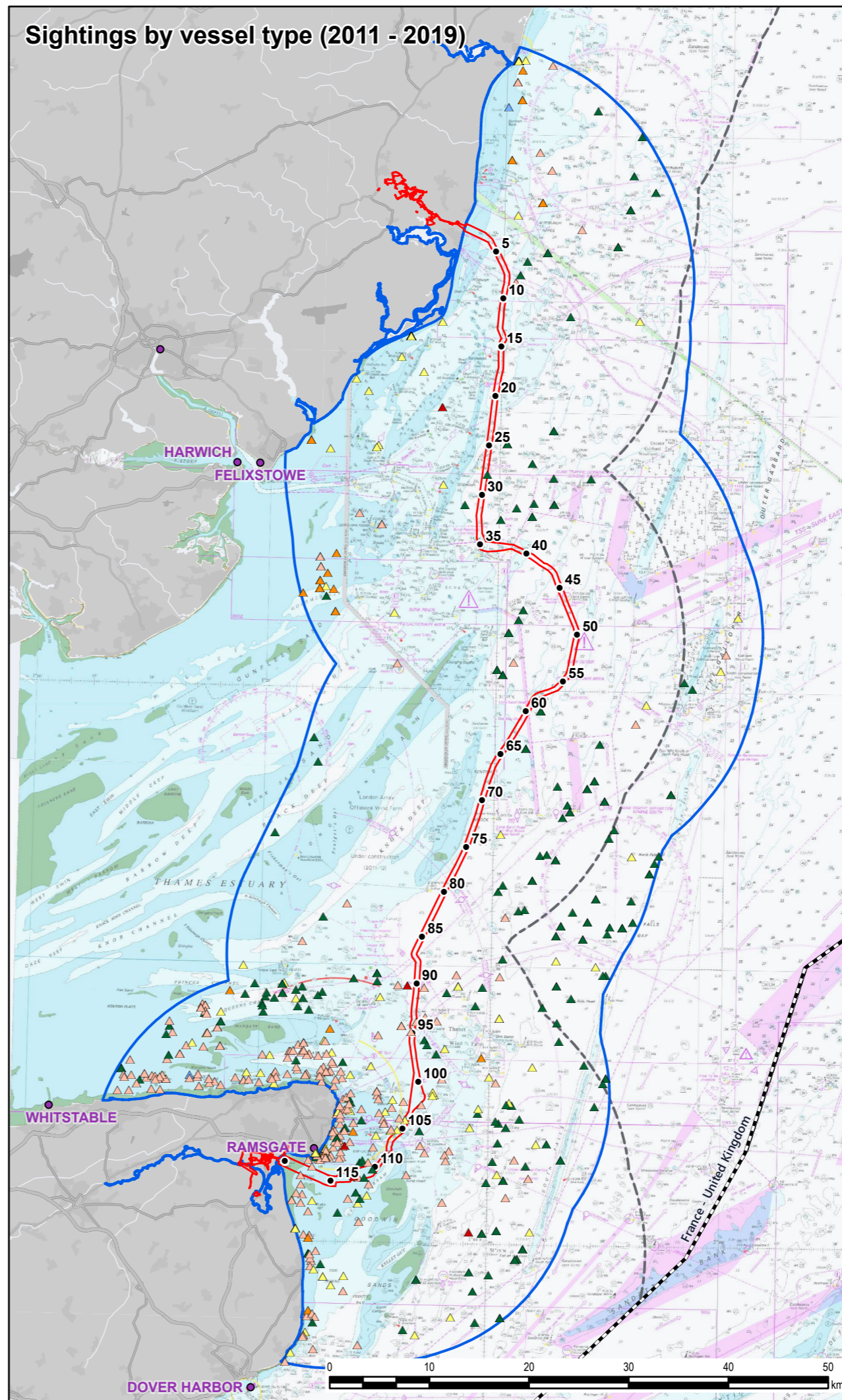
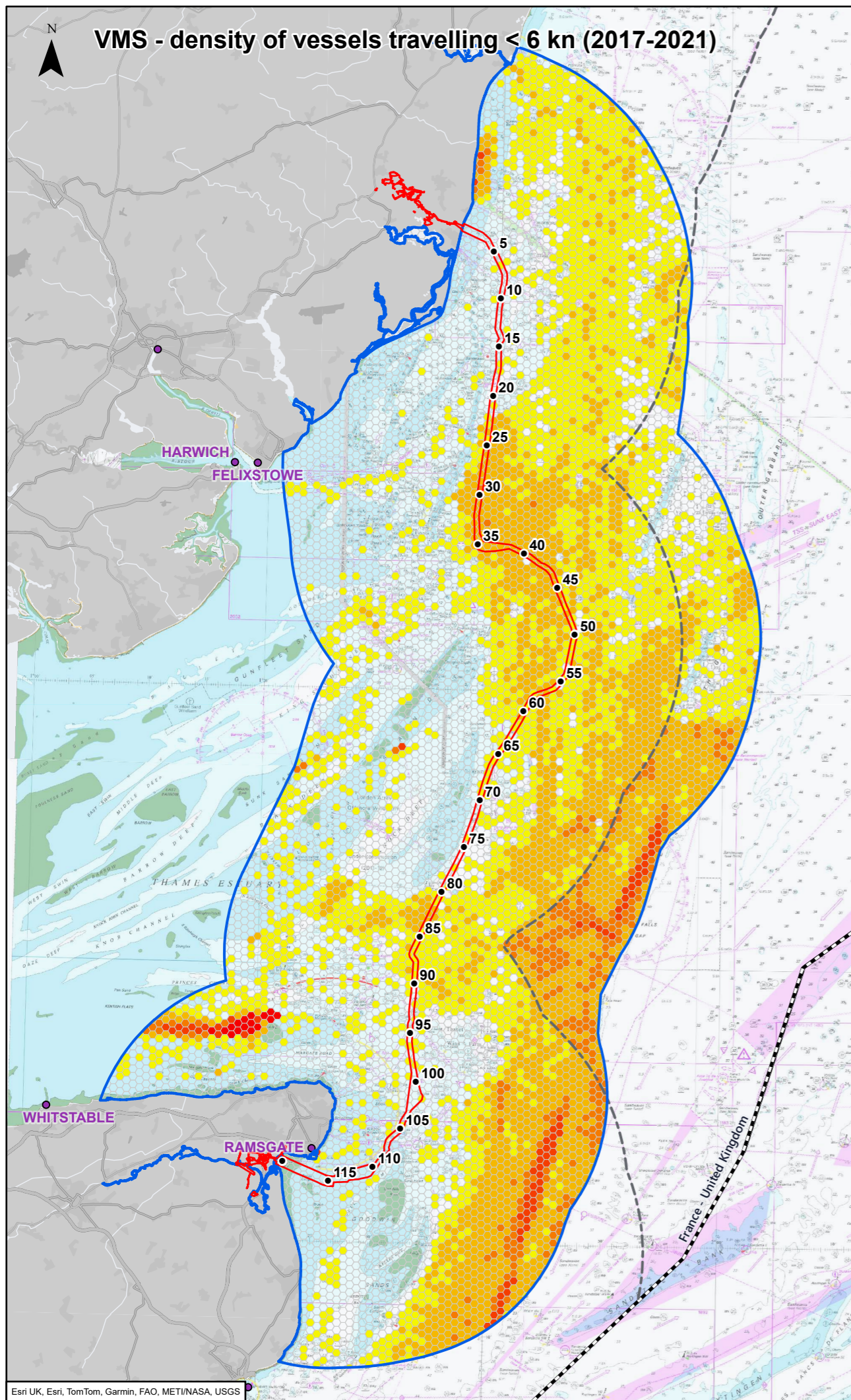
Document Title: Fishing vessels by vessel length and subtype

Creator: LM	Date: 18/03/2026	Checker: JL	Date: 18/03/2026	Approver: RJ	Date:
Document Ref: FIG 6.4.4.7.A.17	Scale: 1:500,000	Format: A3	Sheets: 1	Rev: 2	



- Legend**
- Kilometre Point (KP)
  - ▭ Order Limits
  - ▭ 10 NM shipping and navigation study area
  - Port
  - - - UK Territorial Sea Limit
  - - - EEZ Boundaries
  - AIS points where vessel status is set to 'actively fishing', speed <6 knots (likely fishing)
  - AIS points where vessel status is set to 'actively fishing', speed >6 knots (likely transiting)

2	18/03/2026	NAVIGATIONAL RISK ASSESSMENT	LM	JL	RJ
Rev	Date	Description	GIS	Chk	App
<b>nationalgrid</b>					
Scheme: SEA LINK					
Document Title: AIS data points with status set to actively fishing by season					
Creator: LM	Date: 18/03/2026	Checker: JL	Date: 18/03/2026	Approver: RJ	Date:
Document Ref: FIG 6.4.4.7.A.18	Scale: 1:975,000	Format: A3	Sheets: 1	Rev: 2	



**Legend**

- Kilometre Point (KP)
- Order Limits
- 10 NM shipping and navigation study area
- Port
- UK Territorial Sea Limit
- EEZ Boundaries

VMS - density of vessels travelling < 6 kn (2017-2021)

- 0
- 1 - 5
- 6 - 25
- 26 - 50
- 51 - 100
- >100

Sightings by vessel type (9 years, 2011 - 2019)

- ▲ Trawler (all); Demersal stern trawler; Stem trawler (pelagic/demersal); Other trawler
- ▲ Potter/whelker
- ▲ Scallop dredger (French/Newhaven)
- ▲ Other dredges (including mussel)
- ▲ Drift netter
- ▲ Unknown

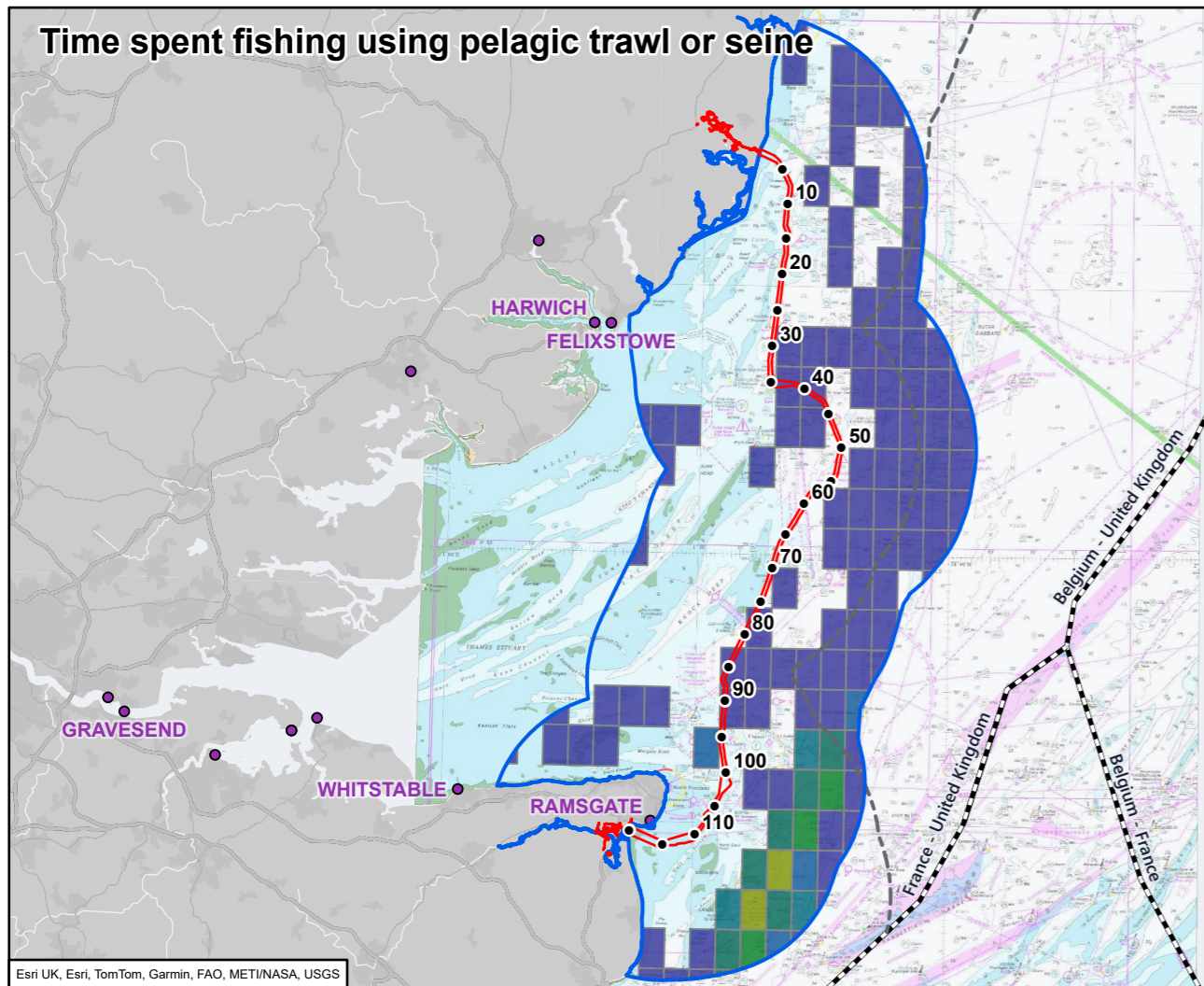
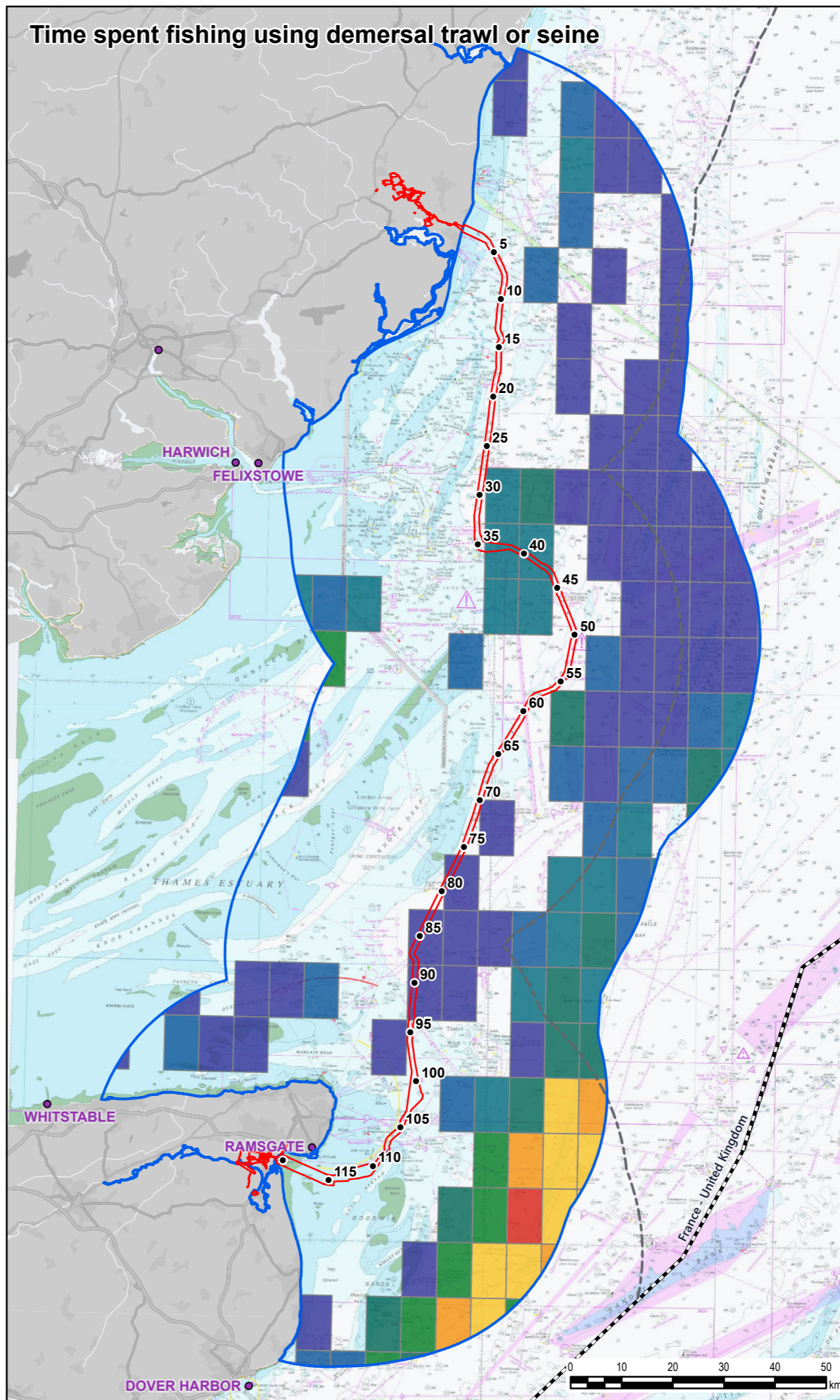
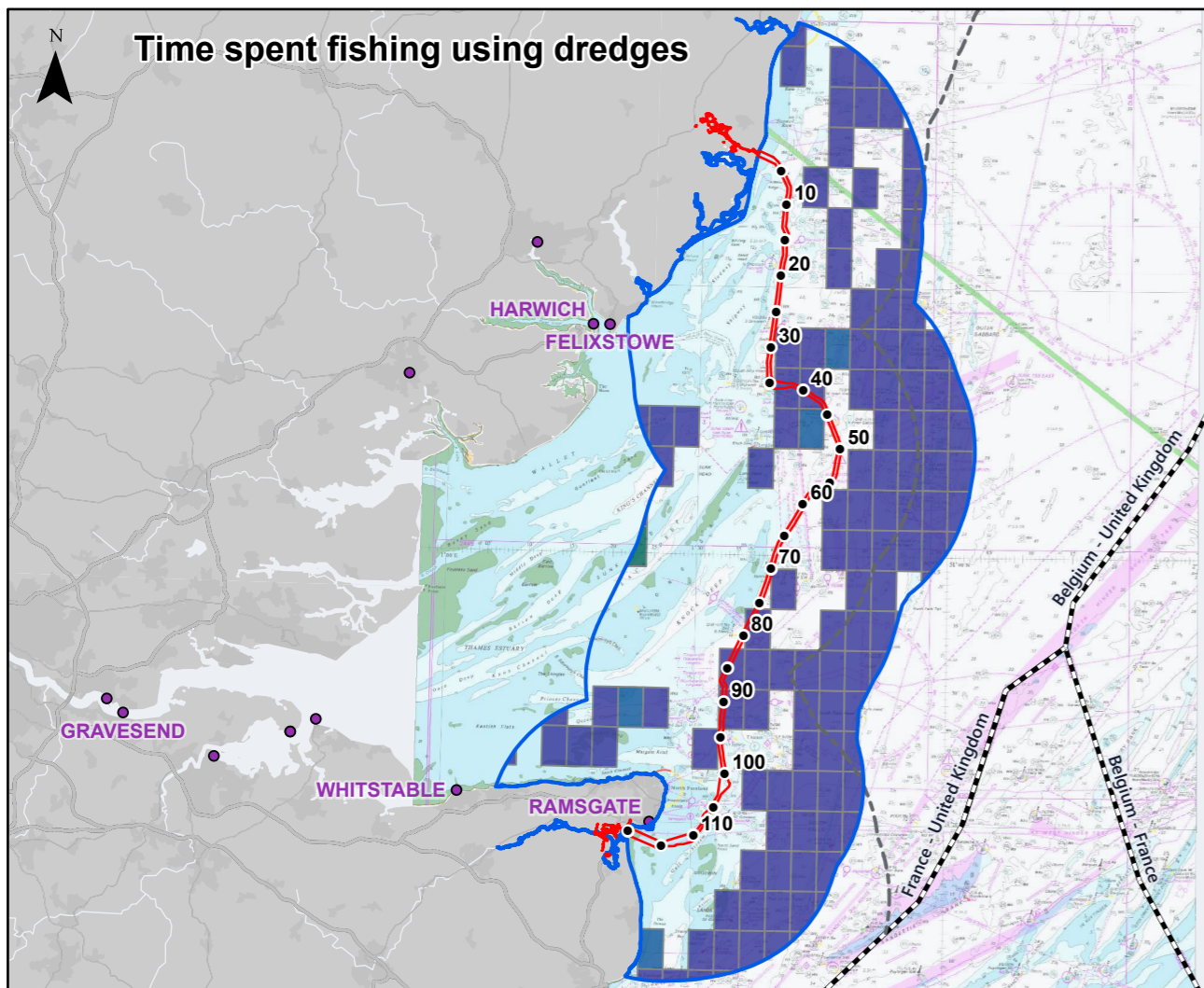
2	18/03/2026	NAVIGATIONAL RISK ASSESSMENT	LM	JL	RJ
Rev	Date	Description	GIS	Chk	App

**nationalgrid**

Scheme: SEA LINK

Document Title: VMS density and sightings

Creator: LM	Date: 18/03/2026	Checker: JL	Date: 18/03/2026	Approver: RJ	Date:
Document Ref: FIG 6.4.4.7.A.19	Scale: 1:500,000	Format: A3	Sheets: 1	Rev: 2	



**Legend**

- Kilometre Point (KP)
- Order Limits
- 10 NM shipping and navigation study area
- Port
- - - UK Territorial Sea Limit
- - - EEZ Boundaries

Fishing time (minutes) by ICES subrectangle (average 2016 to 2019)

- 0 - 25
- 25 - 50
- 50 - 100
- 100 - 250
- 250 - 500
- 500 - 750
- 750 - 1,000
- 1,000 - 3,000
- 3,000 - 5,000
- > 5,000

2	18/03/2026	NAVIGATIONAL RISK ASSESSMENT	LM	JL	RJ
Rev	Date	Description	GIS	Chk	App
<b>nationalgrid</b>					
Scheme:			SEA LINK		
Document Title: VMS by ICES sub-rectangle - fishing time by gear type					
Creator:	Date:	Checker:	Date:	Approver:	Date:
BQ	18/03/2026	JL	18/03/2026	RJ	
Document Ref:	Scale:	Format:	Sheets:	Rev:	
FIG 6.4.4.7.A.20	1:975,000	A3	1	2	

National Grid plc  
National Grid House,  
Warwick Technology Park,  
Gallows Hill, Warwick.  
CV34 6DA United Kingdom

Registered in England and Wales  
No. 4031152  
[nationalgrid.com](http://nationalgrid.com)